



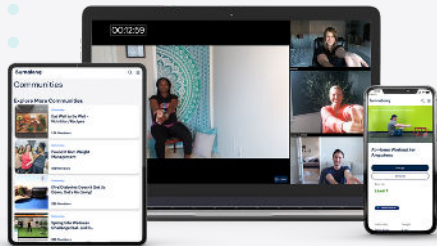
# Boost employee health and business results with Burnalong+

**burnalong**



## WHO WE ARE

We are an end-to-end digital and local health and wellbeing solution for your workforce. We combine our industry-leading platform with immersive experiences, and ongoing enablement, to drive impact for your organization.



## WHO WE HELP

Corporations (from Fortune 100 to local brands), government, health plans, and health systems.

## WHY WE ARE DIFFERENT

### 1 Choice, diversity, and locality

**50,000+**

On-demand and live classes

**10,000+**

Fitness locations<sup>1</sup>

**7,500+**

Local instructors

**70+**

Holistic categories

### 2 Social connection

**Group classes**

**Supportive communities**

**Digital accounts for family & friends**

### 3 Personalization and insights

**Measure engagement**

**Track enrollment**

**Category trends**

**AI-powered experiences**

### 4 Inclusive

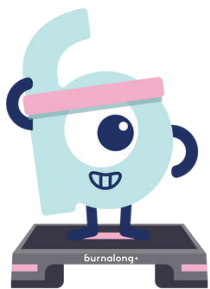
**Adaptive programs**

**Multilingual support**

## INTRODUCING **burnalong+**

Combining digital and local fitness, health and wellbeing in one holistic offering.

Burnalong offers a hybrid wellness solution, with access to in-person fitness locations and live, local and on-demand classes. Participants no longer need to choose between in-person or virtual-only options.



### 10,000+ fitness locations

Access our world-class network of highly recognized brands

### Multi-location access

Subscribers pay one fee to access locations nationwide.

### Wide-range of offerings

Amenities<sup>2</sup> may include: pools, sauna, group classes, cardio equipment, strength training



"Our agency's mission is to take care of America's healthcare, therefore, we too must be well."

Michele Saggese, Centers for Medicare & Medicaid Services



## HOW WE DO IT

### TIERED DIGITAL SOLUTIONS

#### 1 Core solution

Industry-leading digital health platform and inclusive events.

#### 2 Curated approach

Core platform plus customized materials and experiences.

#### 3 Cultural support

Wide-reaching, high-impact initiative plus curated approach.

## HOW IT WORKS

- 1 Alignment on departmental, board, & business KPIs.
- 2 Machine learning from behavior to improve personalization.
- 3 Reporting, data deep-dives, trend analysis, & actionable insights for teams.



## GETTING STARTED

50,000+

On-demand  
& live classes



10,000+

Nationwide  
fitness locations

Our pricing ranges based on the solution selected: Core, Curated, Cultural and includes a member co-pay of \$29 per month for access to our 10,000+ fitness locations nationwide.

Discounts on the \$29 per month fee are available based on the level of employer subsidy.

## WHAT BURNALONG DELIVERS VS. COMPETITORS

- Single, holistic solution for virtual and in-person fitness, health and wellbeing, for everyone
- Chronic condition support, adaptive workouts, prenatal classes, stroke, diabetes, & cancer wellness, ensuring everyone is included
- Digital sub-accounts for family and friends
- A platform built for social support and motivation: online communities and option for live classes with family and friends
- Diverse, local instructors from across the country
- Access to local community classes from across the country
- Beyond basic reporting with trend analysis on individual or line of business

- ① Access to Fitness locations provided by Tivity Health Services, LLC, an affiliate of Burnalong, Inc. Fitness locations are not owned or operated by Tivity Health or its affiliates. Burnalong+ Subscription with fitness location access option entitles subscriber to use the fitness location facilities and amenities available to the holder of a basic membership at the fitness locations. Facilities and amenities vary by location.
- ② Facilities and amenities vary by fitness location. Check with participating fitness location for hours of access.

**burnalong+**